

# Fighting Stick Mini

for PlayStation®5 consoles, PlayStation®4 consoles, and Windows® PC\*

## Instruction Manual

Thank you for purchasing this product.

Before using this product, please read the instructions carefully.

After reading the instruction manual, please keep it for reference.

\*PC compatibility not tested nor endorsed by Sony Interactive Entertainment.



### Table of Contents

Caution .....	2
Contents .....	3
Compatibility .....	3
Layout and Features .....	4
How to Connect .....	5
Troubleshooting .....	6
Specifications .....	7



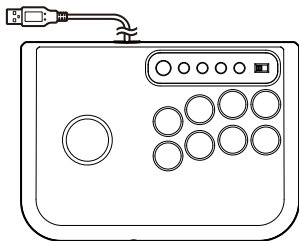


## Caution

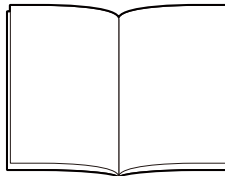
**Parents / Guardians:  
Please read the following information carefully.**

- Long cord. Strangulation hazard. Keep away from children under 3 years old.
- Keep this product away from small children or infants.
- Keep the product away from dusty or humid areas.
- Do not use this product if it has been damaged or modified.
- Do not get this product wet. This may cause an electric shock or malfunction.
- Do not place this product near heat sources or leave under direct sunlight for an extended period.  
Overheating may cause malfunction.
- Do not use this product with a USB hub or extension cable. The product may not function properly.
- Do not insert the USB plug into socket-outlets.
- Do not touch the metal parts of the USB plug.
- Do not apply strong impact or weight on the product.
- Do not pull roughly or bend the cable of the product.
- Do not disassemble, modify or attempt to repair this product.
- If product needs cleaning, use only a soft dry cloth. Do not use any chemical agents like benzene or thinner.
- The packaging must be retained since it contains important information.
- Please retain this instruction manual for your future reference.
- The normal function of the product may be disturbed by strong electro-magnetic interference. If so, simply reset the product to resume normal operation by following the instruction manual (How to Connect). In case the function does not resume, please relocate to an area which does not have electro-magnetic interference to use the product.

## Contents



Controller × 1



Instruction Manual × 1

## Compatibility

### PlayStation® 5 console, PlayStation® 4 console

#### Important

Before using this product with your console, please read the included instructions carefully. Please check that your console is updated to the latest system software.

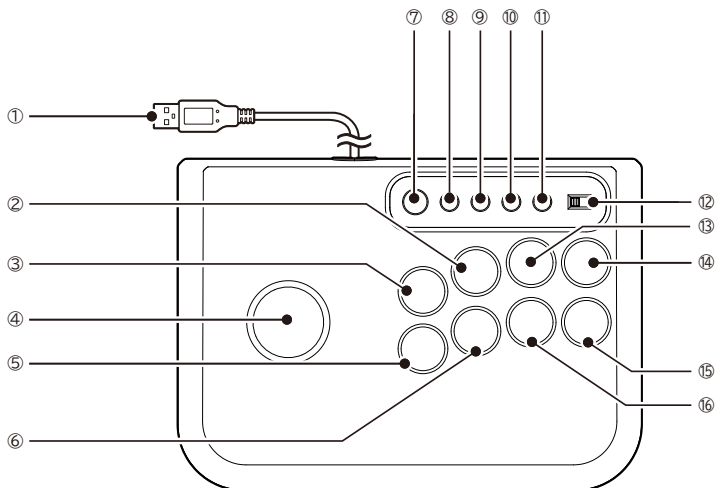
An internet connection is required to update the console to the latest system software.

### PC \*

\*PC compatibility not tested nor endorsed by Sony Interactive Entertainment.

Supported OS	Windows®11 / 10	
Input Method	XInput	✓
	DirectInput	✗
System Requirements	USB-A Port	

# Layout and Features



① ... USB-A Connector	⑨ ... [PS5°] ≡ (Options) button [PS4™] OPTIONS button	[PC] START button
② ... [PS5°, PS4™] Δ button		[PC] Y button
③ ... [PS5°, PS4™] □ button	⑩ ... [PS5°, PS4™] L3 button	[PC] X button
④ ... Joystick (Directional buttons)	⑪ ... [PS5°, PS4™] R3 button	[PC] Left Stick button
⑤ ... [PS5°, PS4™] × button		[PC] Right Stick button
⑥ ... [PS5°, PS4™] ○ button	⑫ ... Hardware Toggle Switch	
⑦ ... [PS5°, PS4™] ⊕ (PS) button	⑬ ... [PS5°, PS4™] R1 button	[PC] RB button
⑧ ... [PS5°] √ (Create) button	⑭ ... [PS5°, PS4™] L1 button	[PC] LB button
[PS4™] SHARE button	⑮ ... [PS5°, PS4™] L2 button	[PC] LT button
	⑯ ... [PS5°, PS4™] R2 button	[PC] RT button

## Caution

- The console cannot be turned on with the ⊕ (PS) button.
- The ⊕ (PS) button cannot be used to return from Rest Mode (PS5° consoles) or Standby Mode (PS4™ consoles).
- Do not press any buttons, switches or the joystick when returning from Rest Mode (PS5° consoles) or Standby Mode (PS4™ consoles).

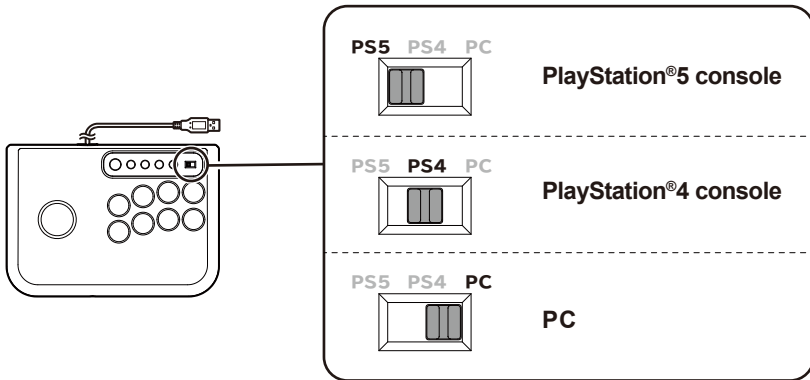
The controller does not have the following functions:

- Adaptive triggers
- Motion sensor function
- Vibration function
- Left stick
- Right stick
- Touch pad
- Touch pad button
- Microphone
- Speaker
- Light bar
- Player indicator
- Headset jack

# How to Connect

1

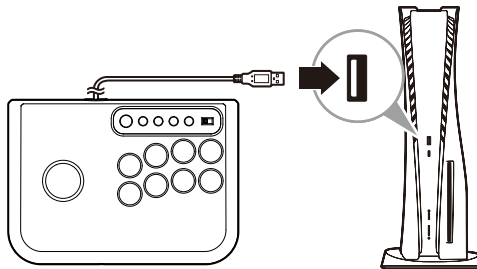
Set the Hardware Toggle Switch as appropriate.



2

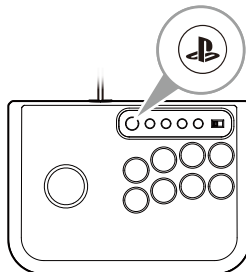
Plug in the cable to the hardware.

- Do not plug in the USB cable while pushing any buttons, switches, or moving the joystick.



3

Press the  (PS) button.





# Troubleshooting

If this product does not function as desired, please check the following:

## ① Pushing the (PS) button does not turn on the console

Pressing the  (PS) button will not power on the console. Please power on the console normally before use.



**For PlayStation®5 console :** Push the power button on the PlayStation®5 console or press the  (PS) button on the DualSense® Wireless Controller that is paired to the console.

**For PlayStation®4 console :** Push the power button on the PlayStation®4 console or press the  (PS) button on the DUALSHOCK®4 Wireless Controller that is paired to the console.

## ② Controller is responsive on the Home Screen, but not during gameplay

On the console, the controller does not function if you sign in with a different account than the one you selected when starting the software. Please sign in with the controller into same account that was used to start the software. Please note that this product may not function with some console software.

## ③ The product is unresponsive after turning on the console by pressing the (PS) button on the DualSense® Wireless Controller or DUALSHOCK®4 Wireless Controller

If the console is turned on with the  (PS) button on the DualSense® Wireless Controller or DUALSHOCK®4 Wireless Controller, make sure you sign in using the DualSense® Wireless Controller or DUALSHOCK®4 Wireless Controller. From the Home Screen, push the  (PS) button on the product to sign in with the product.

## ④ Hardware Toggle Switch is not functioning properly

Please check the Hardware Toggle Switch. When using the console, change the switch to "PS5" or "PS4" accordingly. Set the Hardware Toggle Switch before connecting to the console.

The product may not work properly if the switch is changed while connected to the console.

This user manual focuses on use with the console, but this product can also be used on a PC following the same instructions.

## ⑤ Controller is not responding even when pushing the (PS) button

Please make sure that the Hardware Toggle Switch is set to the correct hardware. (See "How to Connect" on P.5)

- Please check that your console is updated to the latest system software.

- On the console, the controller does not function if you sign in with a different account than the one you selected when starting the software. Please sign in with the controller into same account that was used to start the software.

**For PlayStation®5 console :** Use the DualSense® Wireless Controller to set up the console.

**For PlayStation®4 console :** Use the DUALSHOCK®4 Wireless Controller to set up the console.

# Specifications

External Dimensions (Including Joystick) : W 8.3 × D 5.9 × H 3.4 in / W 21 × D 15 × H 8.7 cm

Weight : 1.1 lbs / 500 g

Cable Length : 8.2 ft / 2.5 m

Connection Type : USB-A Connector

**For more information please  
visit this website.**

<https://stores.horiusa.com/spf-038U>



## CAUTION:

Any changes or modifications not expressly approved by the party responsible for compliance could void the user's authority to operate the equipment.

## THE FCC WANTS YOU TO KNOW

This device complies with part 15 of the FCC Rules. Operation is subject to the following two conditions:

(1) This device may not cause harmful interference, and (2) this device must accept any interference received, including interference that may cause undesired operation.

## NOTE:

This equipment has been tested and found to comply with the limits for a Class B digital device, pursuant to part 15 of the FCC Rules. These limits are designed to provide reasonable protection against harmful interference in a residential installation. This equipment generates, uses and can radiate radio frequency energy and, if not installed and used in accordance with the instructions, may cause harmful interference to radio communications. However, there is no guarantee that interference will not occur in a particular installation. If this equipment does cause harmful interference to radio or television reception, which can be determined by turning the equipment off and on, the user is encouraged to try to correct the interference by one or more of the following measures:

- Reorient or relocate the receiving antenna.
- Increase the separation between the equipment and receiver.
- Connect the equipment into an outlet on a circuit different from that to which the receiver is connected.
- Consult the dealer or an experienced radio/TV technician for help.

## CAN ICES-003(B) / NMB-003(B)

This Class B digital apparatus complies with Canadian ICES-003.

Cet appareil numérique de la classe B est conforme à la norme NMB-003 du Canada.

## Simplified Declaration of Conformity

Hereby, HORI declares that this product is in compliance with Directive 2014/53/EU. The full text of the EU declaration of conformity is available at the following internet address:

<https://hori.co.uk/consumer-information/>

## For UK:

Hereby, HORI declares that this product is in compliance with the relevant statutory requirements. The full text of the declaration of conformity is available at the following internet address:

<https://hori.co.uk/consumer-information/>

## PRODUCT DISPOSAL INFORMATION

Where you see this symbol on any of our electrical products or packaging, it indicates that the relevant electrical product or battery should not be disposed of as general household waste in Europe. To ensure the correct waste treatment of the product and battery, please dispose of them in accordance with any applicable local laws or requirements for disposal of electrical equipment or batteries. In so doing, you will help to conserve natural resources and improve standards of environmental protection in treatment and disposal of electrical waste.



HORI warrants to the original purchaser that our product purchased new in its original packaging shall be free of any defects in both material and workmanship for a period of one year from the original date of purchase. If the warranty claim cannot be processed through the original retailer, please contact HORI customer support.

For customer support in North America and Latin America, please use our customer support form:

<https://stores.horiusa.com/contact-us/>

For customer support in Europe, please email [info@horiuk.com](mailto:info@horiuk.com)

Warranty information:

<https://stores.horiusa.com/policies/>

Actual product may differ from image.

The manufacturer reserves the right to change the product design or specifications without notice.

“PS”, “PlayStation”, “PS5”, “PS4”, “DualSense” and “DUALSHOCK” are registered trademarks or trademarks of Sony Interactive Entertainment Inc.

All other trademarks are the property of their respective owners.

Manufactured and distributed under license from Sony Interactive Entertainment Inc. or its affiliates.

HORI & HORI logo are registered trademarks of HORI.